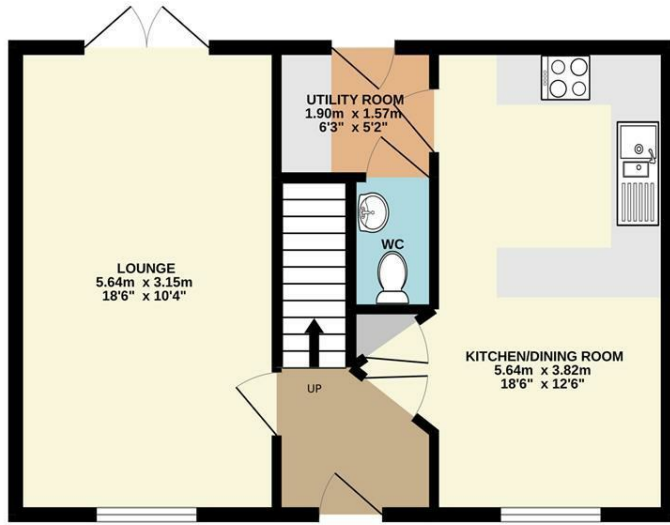
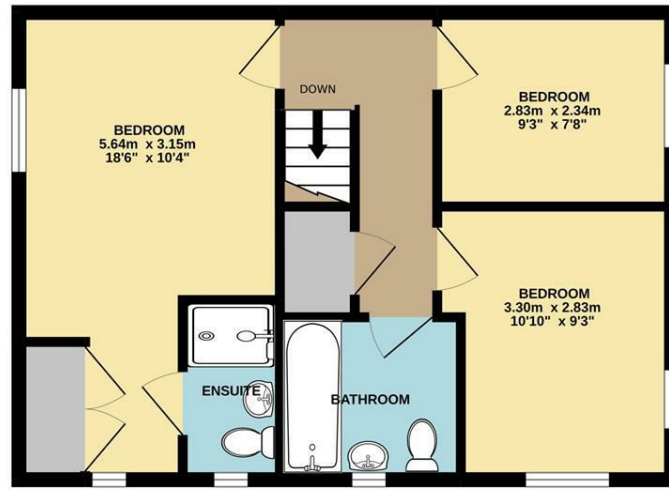


Energy Efficiency Rating		Current	Potential
Very energy efficient - lower running costs			
(92 plus) A			94
(81-91) B		83	
(69-80) C			
(55-68) D			
(39-54) E			
(21-38) F			
(1-20) G			
Not energy efficient - higher running costs			
England & Wales		EU Directive 2002/91/EC	

GROUND FLOOR
44.4 sq.m. (478 sq.ft.) approx.



1ST FLOOR
44.4 sq.m. (478 sq.ft.) approx.



TOTAL FLOOR AREA : 88.8 sq.m. (955 sq.ft.) approx.

Whilst every attempt has been made to ensure the accuracy of the floorplan contained here, measurements of doors, windows, rooms and any other items are approximate and no responsibility is taken for any error, omission or mis-statement. This plan is for illustrative purposes only and should be used as such by any prospective purchaser. The services, systems and appliances shown have not been tested and no guarantee as to their operability or efficiency can be given.
Made with Metropix ©2022

Disclaimer – In accordance with the Property Misdescriptions Act, the company gives notice that all descriptions, references to condition, necessary permissions for use and other details are given in good faith and believed to be correct, but any intending lessees do not rely on them as statements of fact, but must satisfy themselves by inspection or other means, as to their accuracy.



Harness Maker Way | Norwich | NR9
Guide Price £325,000

abbotFox

abbotFox presents this stylish, modern family home. Occupying a prime position, with open field views to the front, this home has been thoughtfully improved by the current owners. Accommodation comprises; entrance hall, spacious lounge, stylish kitchen diner, utility and cloakroom to the ground floor, with three bedrooms, ensuite shower room and family bathroom to the first floor. Externally, the property offers ample off road parking, garage and an enclosed rear garden. With access to well regarded schools, nearby amenities and easy access to the A11, this home is an ideal opportunity for any young family. An internal viewing comes highly recommended.

